



NSF Funding Opportunities: Statistics, Mathematics, and Data Science

September 25, 2020

Huixia Judy Wang
Program Officer Division of
Mathematical Sciences
National Science Foundation

NSF ORGANIZATIONAL CHART

DIRECTORATE

MPS

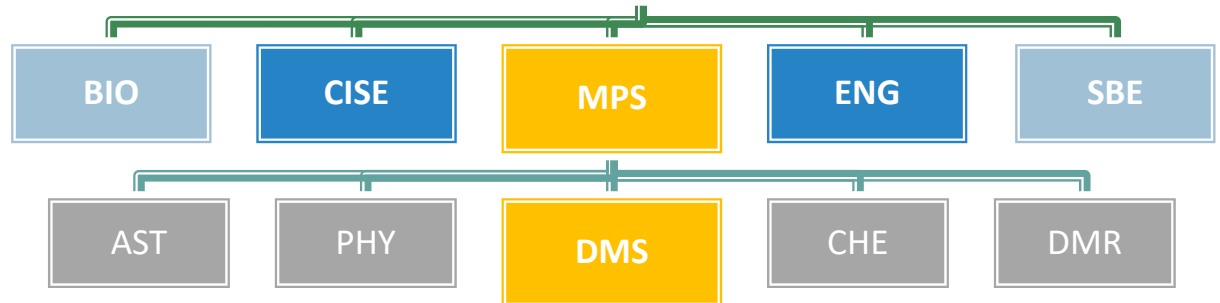
MATHEMATICAL
AND PHYSICAL
SCIENCES

DIVISION

DMS

DIVISION OF
MATHEMATICAL
SCIENCES

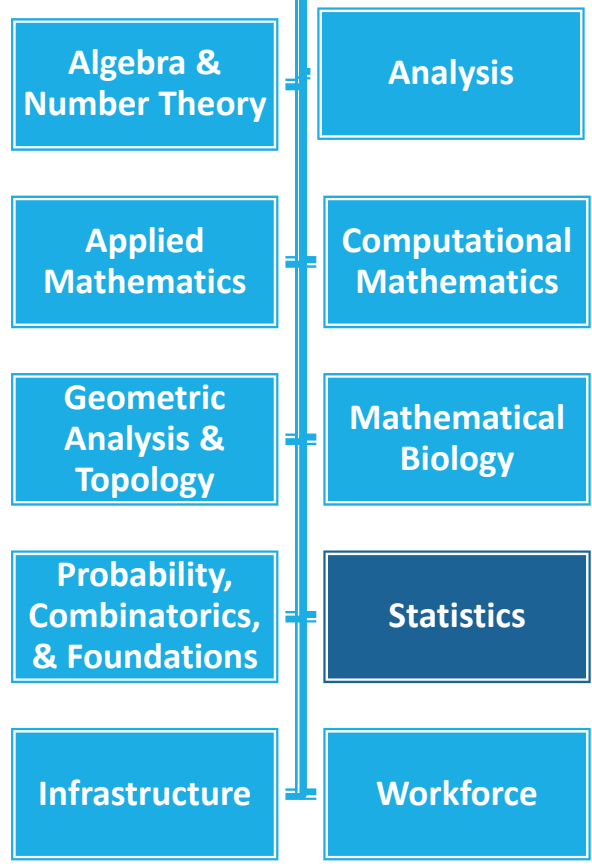
PROGRAM



Juan C. Meza
Division
Director



Tie Luo
Deputy
Division Director



Statistics Program Officers



Nandini
Kannan
(On Leave)



Edsel Pena
(rotator)



Gabor
Szekely
(permanent)



Huixia
Judy Wang
(rotator)

Yong Zeng
(rotator)

National Science Foundation



Research Programs

- ▶ **Faculty Early Career Development Program (CAREER)**

- Deadline: July

https://www.nsf.gov/funding/pgm_summ.jsp?pi_ms_id=503214

- ▶ **Regular Statistics Program**

- Submission window: Dec 1–15, 2020

- https://www.nsf.gov/funding/pgm_summ.jsp?pi_ms_id=5556&org=DMS&from=home



- ▶ **DMS/NIGMS** (Interface of the Biological and Mathematical Sciences)
 - Solicitation: <https://www.nsf.gov/pubs/2020/nsf20575/nsf20575.htm>
 - September 1–18, 2020
- ▶ **CDS&E–MSS** (computational and massive-data challenges presented to scientific and engineering communities)
 - https://www.nsf.gov/funding/pgm_summ.jsp?pims_id=504687
 - September 1–15, 2020
- ▶ **ATD** (Algorithms for Threat Detection)
 - <https://www.nsf.gov/pubs/2020/nsf20531/nsf20531.htm>
 - February 17, 2021
- ▶ **MoDL** ([NSF–Simons Research Collaborations on the Mathematical and Scientific Foundations of Deep Learning](#))
- ▶ **SenSE** ([Multimodal Sensor Systems for Precision Health Enabled by Data Harnessing, Artificial Intelligence, and Learning](#))
- ▶ **More: AMPS, FRGMS, TRIPODS, CRCNS, Smart & Connected Health, HDR**
<https://www.nsf.gov/funding/programs.jsp?org=DMS>



Training & Career Development

- ▶ **GRFP** (Graduate Research Fellowship Program)
 - <https://www.nsf.gov/pubs/2018/nsf18573/nsf18573.pdf>
 - October 25, 2019
- ▶ **MSPRF** (Mathematical Sciences Postdoctoral Research Fellowships)
 - <https://www.nsf.gov/pubs/2016/nsf16558/nsf16558.pdf>
 - October 31, 2019
- ▶ **MSGI** (NSF Mathematical Sciences Graduate Internship)
 - For math science doctoral students to participate in internships at federal national laboratories, industry and other approved facilities
 - <https://orise.orau.gov/nsf-msgi>
 - January 31
- ▶ **Others:** RTG (Research Training Groups in the Mathematical Sciences); REU (Research Experiences for Undergraduates) Sites



Community Resources

- ▶ Mathematical Sciences Institutes–A Community Resource (www.mathinstitutes.org)
- ▶ NSF TRIPODS Institutes: <https://nsf-tripods.org/>
 - [Foundations of Data Science Institute](#)
 - [Institute for Foundations of Data Science](#)
- ▶ NSF–SF MoDL centers
 - [THEORINET](#)
 - [The Collaboration on the Theoretical Foundations of Deep Learning](#)
- ▶ [AI Institutes](#), e.g.
 - [Institutes for Foundations of ML \(UT Austin\)](#)
- ▶ HDR Institutes



Final Remarks

- Check the published abstracts on the NSF website:
<http://www.nsf.gov/awardsearch>
- Volunteer as a reviewer! Email the PD or visit
<https://www.nsf.gov/additional-resources.jsp?org=DMS>
- Talk to Program Officers
 - JSM: DMS Meet & Greet; Speed Coaching
 - DMS office hours (TBA)



QUESTIONS?

Huixia Judy Wang
Email: huiwang@nsf.gov
Tel: (703) 292 2279

National Science Foundation

